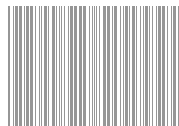
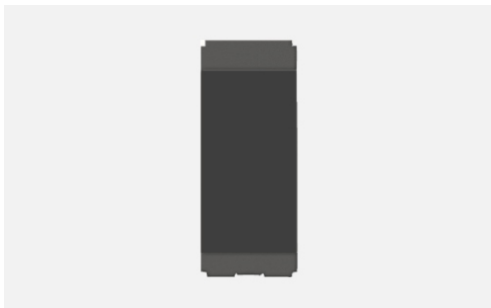


CUBE Series

C5730 .17

Switch 25A - One way - 1 module Charcoal Black

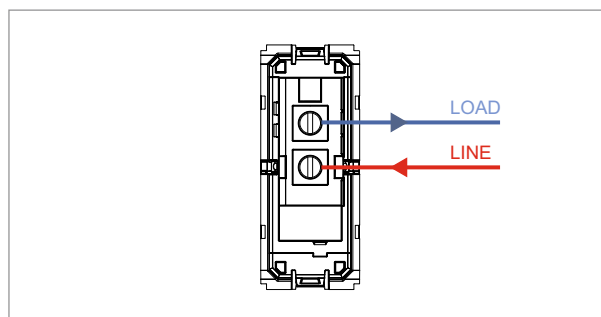


5267.51.8

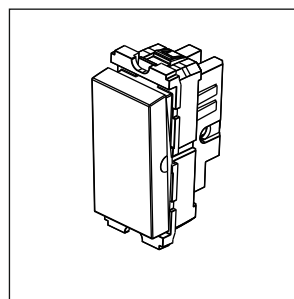
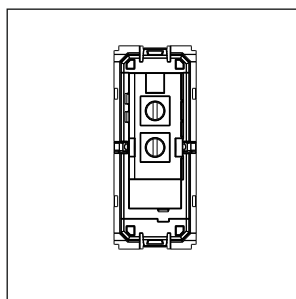
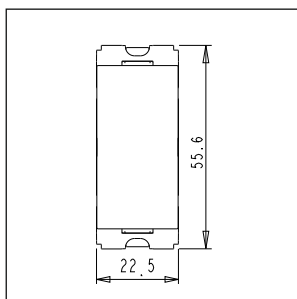
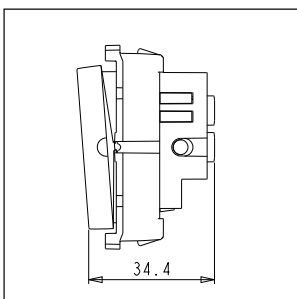


Code:	C5730 .17
Series:	CUBE Series
Family:	Switches
Module Size:	One Module
Colour:	Charcoal Black
Mark:	Norisys
Rated supply voltage:	230V
Maximum resistive load:	25A
Dimensions:	55.6mm x 22.5mm x 34.4mm
Weight:	24.90g

Wiring Diagram:



Drawings:



Installation:



Installation of the product should be carried out in compliance with the current regulations regarding the installation of electrical systems in the country where the product is installed.

The product should be installed by a trained professional following all safety norms.

Keep away from water and wet surfaces. While mounting the product, hands should not be wet.